



Add : NO.2339, Fengchan Road, Fengdong New District, Xi'an City, Shaanxi Prov, China  
Sales Tel : +86-29-38001214      Service Tel : +86-29-33687710, 4006-863-853  
Website : <https://www.tonlyoverseas.com>

Local contact



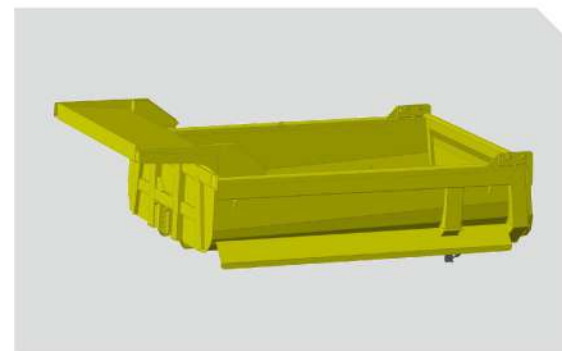
## TL859 AWD off-road dump truck



To be the leading supplier of engineering transportation solution and equipment



## Components Introduction



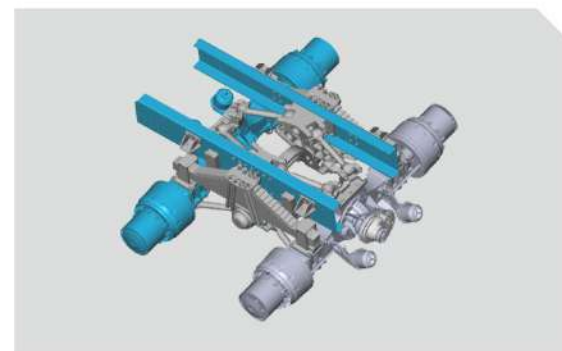
### 1 Cargo body (U type)

The U type cargo box is light, the capacity ratio is high and the fuel consumption is low. The integrated flip shaft, improve the stability of the unloading.



### 2 Tire

Special mining tire for mine only with longitudinal and transverse groove design, which provide excellent grip performance and comfort of operation strong carrying capacity and long service life.



### 3 Suspension system

The front suspension multi-level shock absorption element to improve driving comfort. The rear leaf spring clamping mechanism with TONLY patent is reliable and practical.



### 4 Intake system

Three stage combined air filter can improve the efficiency of air filtering, and improve the air clearness.



### 5 Hydraulic retarder

Transmission combined with hydraulic retarder can reduce the speed of the truck when going down a long slope, works long time and high power, reduce the wear out of braking components and extend the tire life time, ensure the operation safety.



### 6 FOPS/ROPS certificate

Tonly product is the only one obtained the certificate for big payload through severe test.



### 7 Steering system

Tonly developed full hydraulic steering system (TONLY owns all patent of this technology), reduce the steering oil temperature, steering operation is lighter, greatly improve the life cycle of the system components, and ensure the truck safety.



### 8 Anti-collision structure

Anti-collision beam + bumper + through beam structure, effectively protects the driver and the truck.





## TL859 AWD off-road dump truck

6x6 all-wheel drive off-road dump truck suitable for soft road surface and wet and muddy working conditions is the first choice. This dump truck is equipped with an electronically controlled engine and an automatic gearbox, with more convenient control and higher efficiency. Low procurement costs, high operational efficiency and short-term return on investment.

### Main system characteristics

#### ➤ Engine

- New performance optimization version, high efficient fuel saving.
- 12L large displacement, strong power and wide power coverage.



#### ➤ Automatic transmission

- Have high reliability and torque capacity.
- The integrated hydraulic retarder provides excellent auxiliary braking capability for heavy loading dump trucks and improves operation safety.



#### ➤ Mining special cab

- Special cab for mining truck with large space, wide visible range and comfortable manipulation.
- Compression molding Interior with lower noise and good quality.



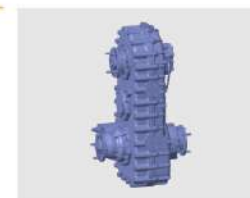
#### ➤ Axle

- TONLY and HANDE jointly design the special axle for mine transportation. Strengthened single casting axle housing, double reduction.
- Big torque, high transmission efficiency and high reliability.



#### ➤ Transfer gear case

- With high efficiency two way twisting ability, suitable for AWD dump truck.
- Built in active lubricating oil pump to improve the reliability and service life of each operating component.



#### ➤ Main frame

- Flexible bolt and rivet connection frame type with high torsional bearing efficiency and long service life.



#### ➤ Lifting system

- Selected mining special oil cylinder system , which has better stability and greater thrust.
- Optimized design of connecting support, strengthened support and improved lifting safety.





Overall parameters	Model	TL859
	Brand	Tonly
	Drive mode	6×6
	GVW (t)	66
	Rated payload (t)	40
	Kerb weight (t)	26
	Dimensions (mm)	9187×3216×4002
	Wheelbase (mm)	3710+1800
	Wheel track (mm)	2581/2588
	Minimum ground clearance (mm)	525
	Minimum turning radius (m)	11
	Maximum height of bucket lift (mm)	9029
	Maximum angle of bucket lift (°)	52
	Loading height (mm)	3632
	Braking distance (m)	15
Engine	Model	WP12G460E310
	Manufacturer / Country	Weichai/China
	Power (hp/kw)	460/338
Transmission	Model	FC6A210DPRT
	Manufacturer / Country	Xi'an FC/China
	Input torque (N·m)	2100
Axle	Manufacturer / Country	Hande/China
	Load/T	18+23+23
Tires / Rims	Tire model	Front 23.5R25 rear 750/65R25
	Rim size	Front 19.5-25 rear 24.0-25

Container	Base plate material/thickness (mm)	T700/16
	Rear plate material/thickness (mm)	T700/10
	Front plate material/thickness (mm)	T700/10
	Side plate material/thickness (mm)	T700/10
	Container volume (m³)	24
Hydraulic system	Model	FC157
	Manufacturer / Country	HYVA/China
	Steering device	Fully hydraulic steering
	Lifting time (s)	23
	Discharge time (s)	23
Weight distribution	Empty load	
	Front axle (kg)	10000
	Rear axle (kg)	16000
	Total weight (50% fuel) (kg)	26000
	Loaded	
	Front axle (kg)	16000
	Rear axle (kg)	50000
	Total weight (kg)	66000

